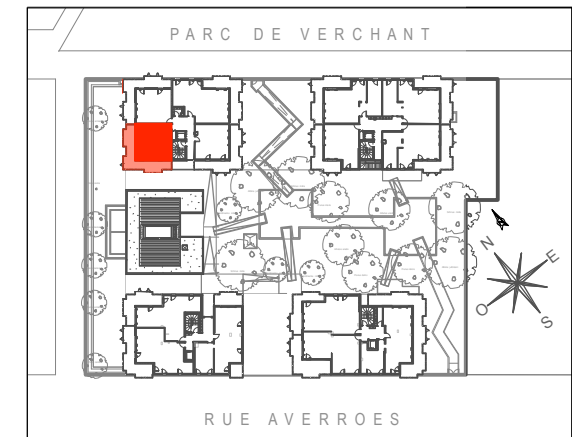
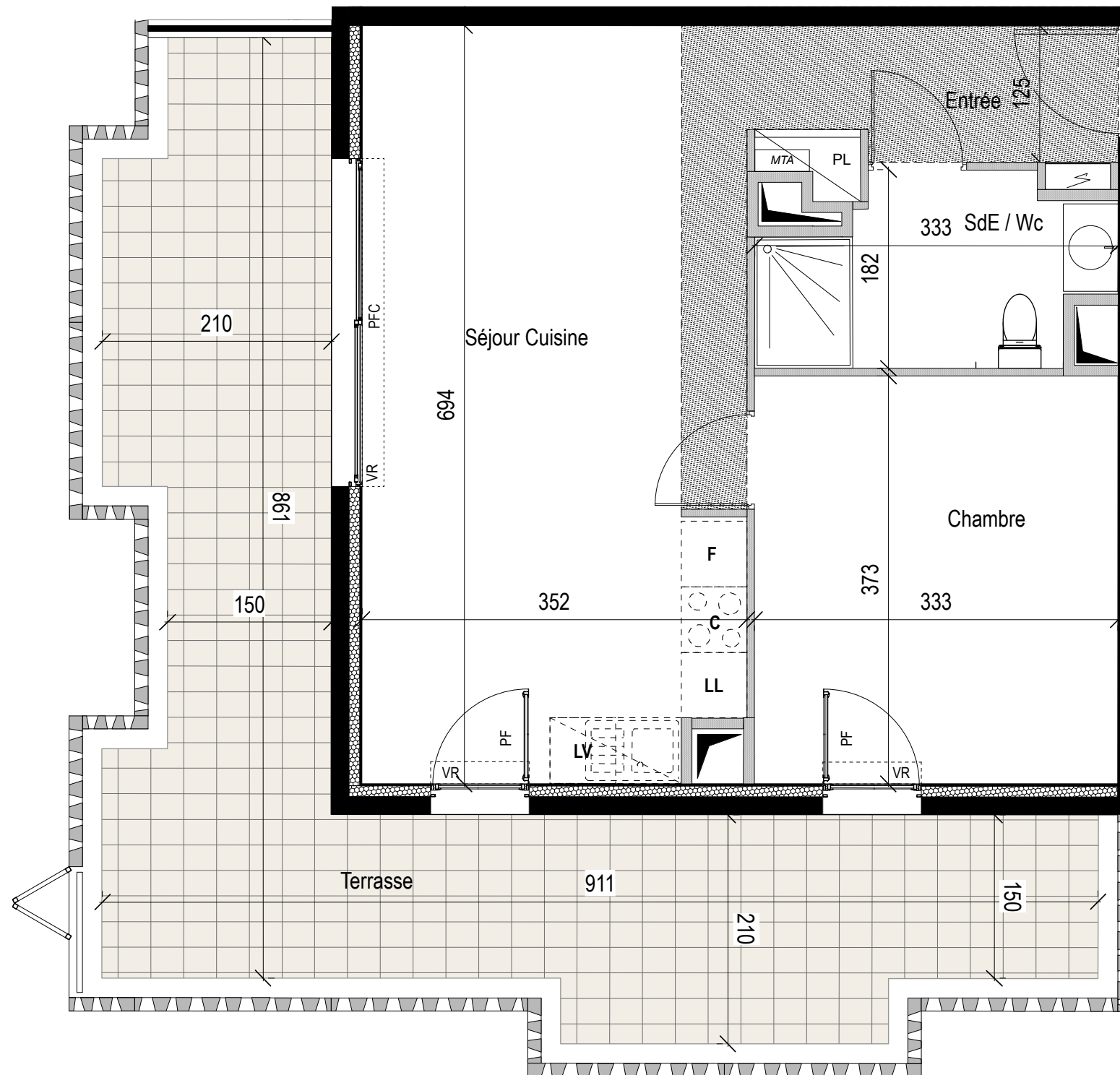


# Résidence L'intemporelle

## PLAN DE PRE-COMMERCIALISATION





Etage : R+3 Type : T2


N° Appartement E31

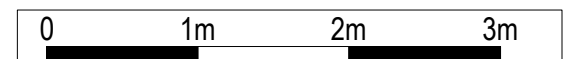
ENTREE + PL	4,30 m <sup>2</sup>
SEJOUR CUISINE	24,00 m <sup>2</sup>
CHAMBRE	12,40 m <sup>2</sup>
SALLE D'EAU + Wc	4,90 m <sup>2</sup>
<b>SURFACE HABITABLE</b>	<b>45,60 m<sup>2</sup></b>
TERRASSE	28,20 m <sup>2</sup>
<b>SURFACE TOTALE</b>	<b>73,80 m<sup>2</sup></b>

### LEGENDE

**MENUISERIES :**  
 VR Volet roulant F Fenêtre AV Allege vitree  
 PF Porte Fenêtre PFC Porte Fenêtre Couissante

**FACADES TERRASSES :**  
 Garde Corps béton ajouré  
 Garde corps métal et Volets aluminium ajourés coulissants repliables

**AMENAGEMENTS :**  
 Tableau électrique  Faux-plafond ou soffite  Gaine technique



01/10/2020

Indice : 0